

eni portugal bv

## Apêndice 2

rep ms 003 hse eni Portugal BV r00



Zona de Segurança para o  
poço Santola 1X

eni

# Poço Santola 1X – Coordenadas

<b>SANTOLA 1X WELL</b>			
<b>UTM 29 N - WGS 84</b>		<b>Portugal TM06 - ETRS 89</b>	
X- Easting	463395	X- Easting	-113497,1740
Y - Northing	4126509	Y - Northing	-263846,9910
Lat - N	37° 17' 4.0524"	Lat - N	37° 17' 4.0524"
Lon - W	9° 24' 46.6027"	Lon - W	9° 24' 46.6027"
<b>COORDINATE SYSTEM:</b>	<b>UTM Zone 29 N - WGS84</b>	<b>COORDINATE SYSTEM:</b>	<b>PT TM06 - ETRS 89</b>
Projection:	Transverse Mercator	Projection:	Transverse Mercator
Ellipsoid:	WGS 84	Ellipsoid:	GRS 1980
Datum:	WGS 84	Datum:	ETRS 1989
False Easting:	500.000,00	False Easting:	0,0
False Northing:	0,0	False Northing:	0,0
Central meridian:	9° 00' 00" W	Central meridian:	8° 7' 59.1900" W
Scale Factor:	0,9996	Scale Factor:	1,00000
Latitude of Origin:	0° 00' 00" N	Latitude of Origin:	39° 40' 5.7300" N
Units:	Meter	Units:	Meter

## **Zona de Segurança - *radius***

500 m (contados a partir de cada parte do navio)

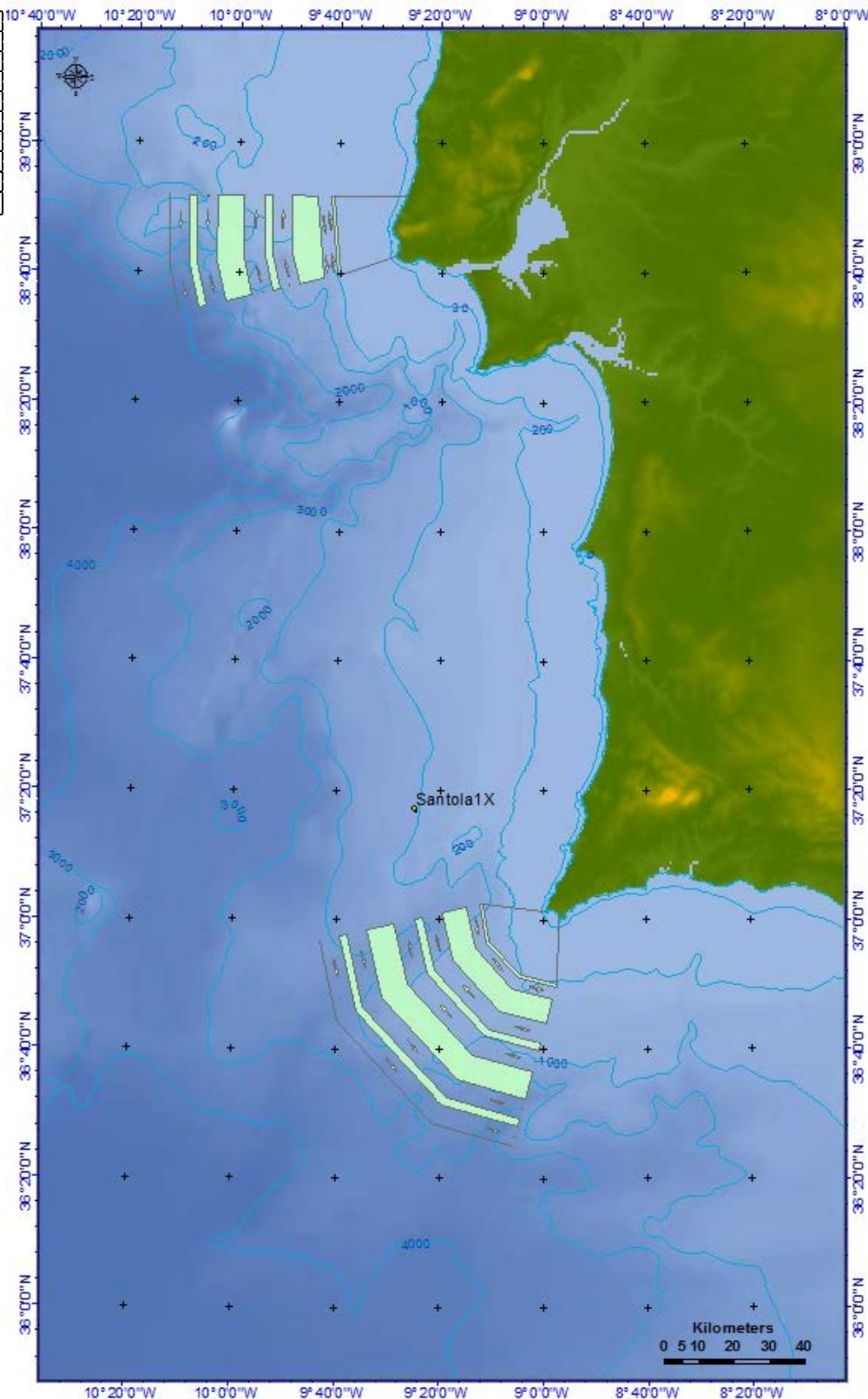


eni

# Poço Santola 1X – Zona de Segurança de 500 m

## Mapa 1:500,000

Coordinate	WGS84 UTM Zone
Projection:	Transverse Mercator
Datum:	WGS 1984
False Easting:	500,000.00
False Northing:	0
Central Meridian:	-9.0
Scale Factor:	0.9996
Latitude Of	0
Units:	Meter
MAP SCALE	1:500,000



**Zona de  
Segurança -  
radius  
500 m  
(contados a  
partir de cada  
parte do  
navio)**

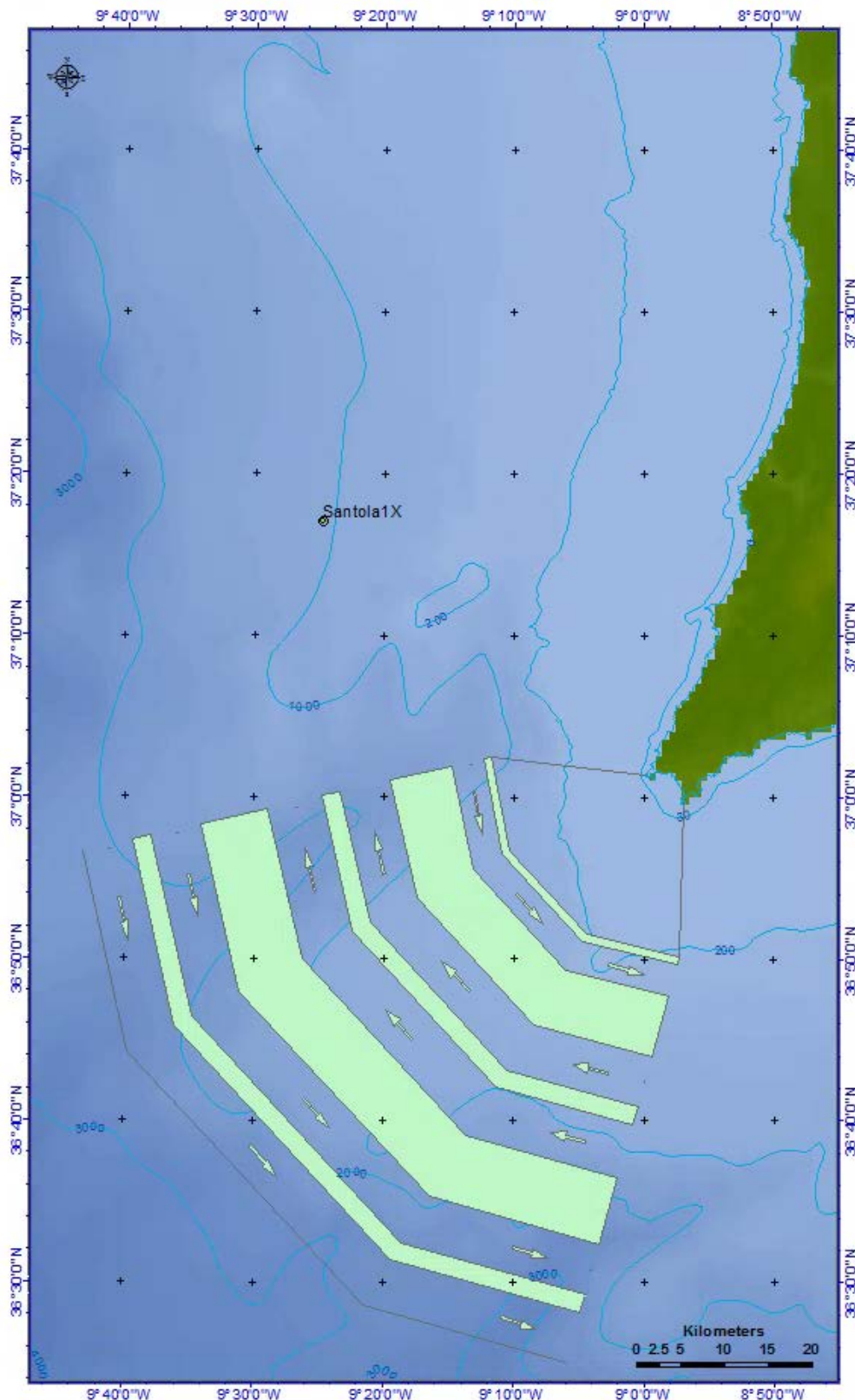


eni

# Poço Santola 1X – Zona de Segurança de 500 m

## Mapa 1:200,000

Coordinate	WGS84 UTM Zone
Projection:	Transverse Mercator
Datum:	WGS 1984
False Easting:	500,000.00
False Northing:	0
Central Meridian:	-9.0
Scale Factor:	0.9996
Latitude Of	0
Units:	Meter
MAP SCALE	1:200,000



**Zona de  
Segurança -  
radius  
500 m  
(contados a  
partir de cada  
parte do  
navio)**

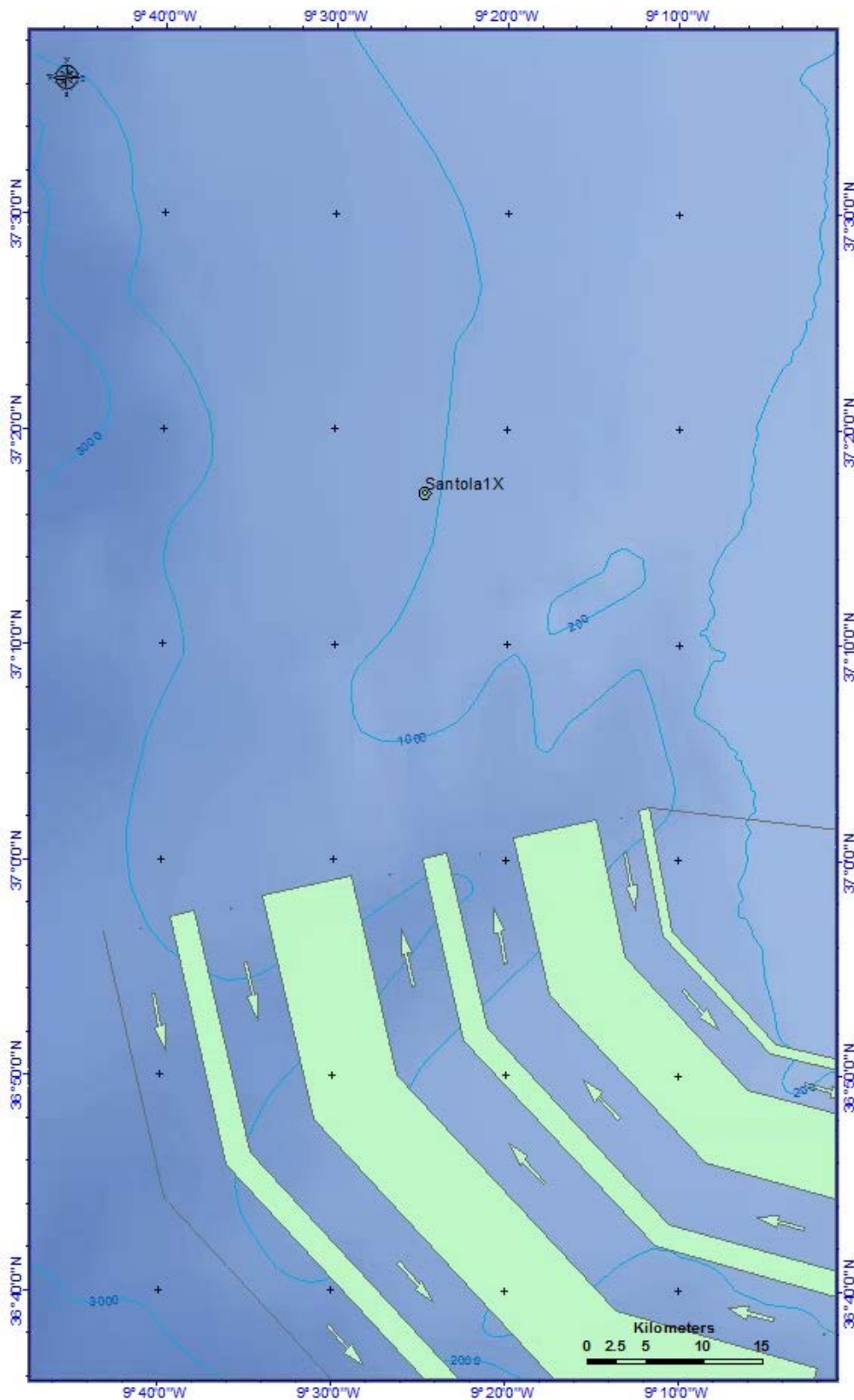


eni

# Poço Santola 1X – Zona de Segurança de 500 m

## Mapa 1:150,000

Coordinate	WGS84 UTM Zone
Projection:	Transverse Mercator
Datum:	WGS 1984
False Easting:	500,000.00
False Northing:	0
Central Meridian:	-9.0
Scale Factor:	0.9996
Latitude Of	0
Units:	Meter
MAP SCALE	1:150,000



**Zona de  
Segurança -  
radius  
500 m  
(contados a  
partir de cada  
parte do  
navio)**

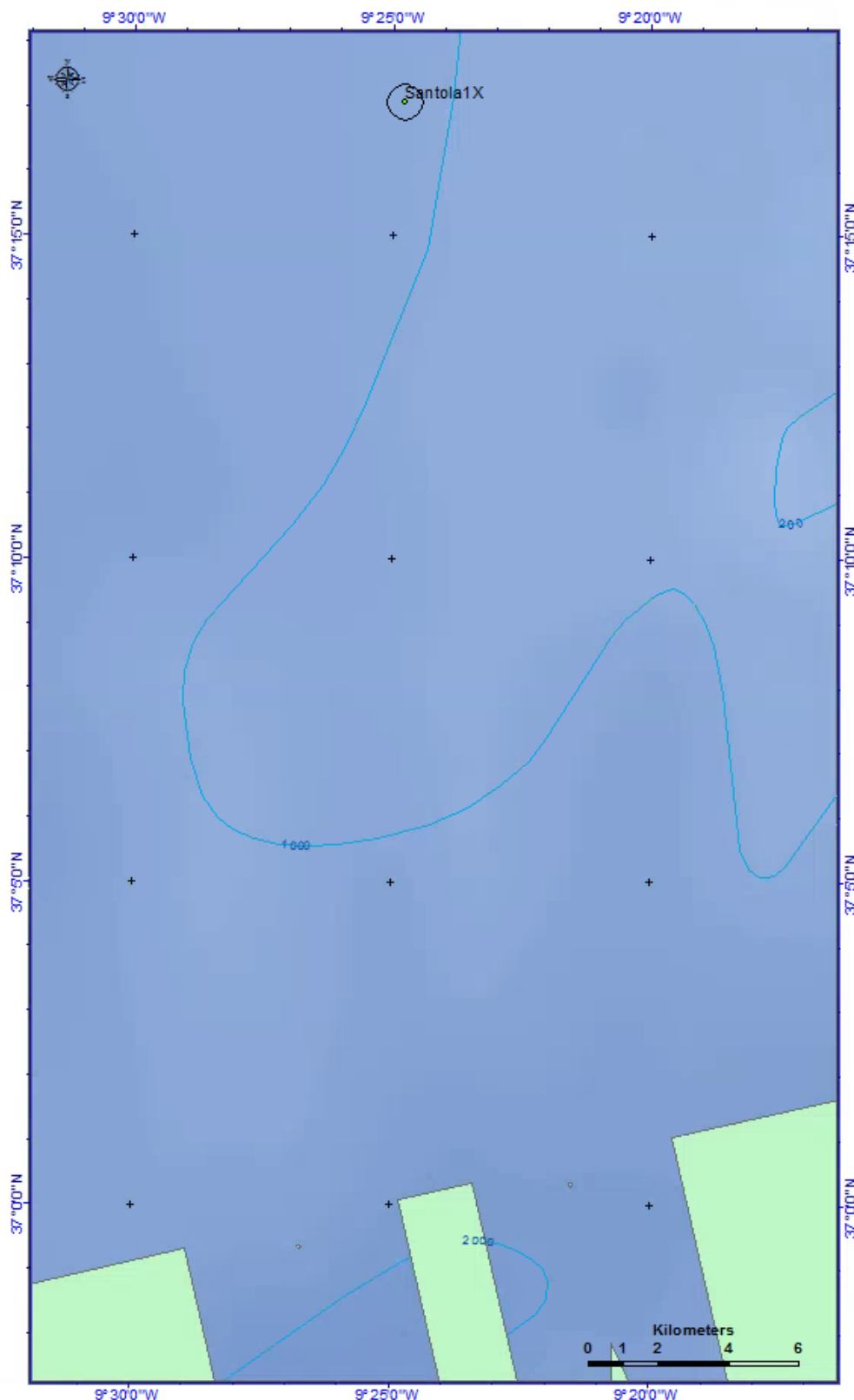


eni

# Poço Santola 1X – Zona de Segurança de 500 m

## Mapa 1:50,000

Coordinate	WGS84 UTM Zone
Projection:	Transverse Mercator
Datum:	WGS 1984
False Easting:	500,000.00
False Northing:	0
Central Meridian:	-9.0
Scale Factor:	0.9996
Latitude Of	0
Units:	Meter
MAP SCALE	1:50,000



**Zona de  
Segurança -  
radius  
500 m  
(contados a  
partir de cada  
parte do  
navio)**

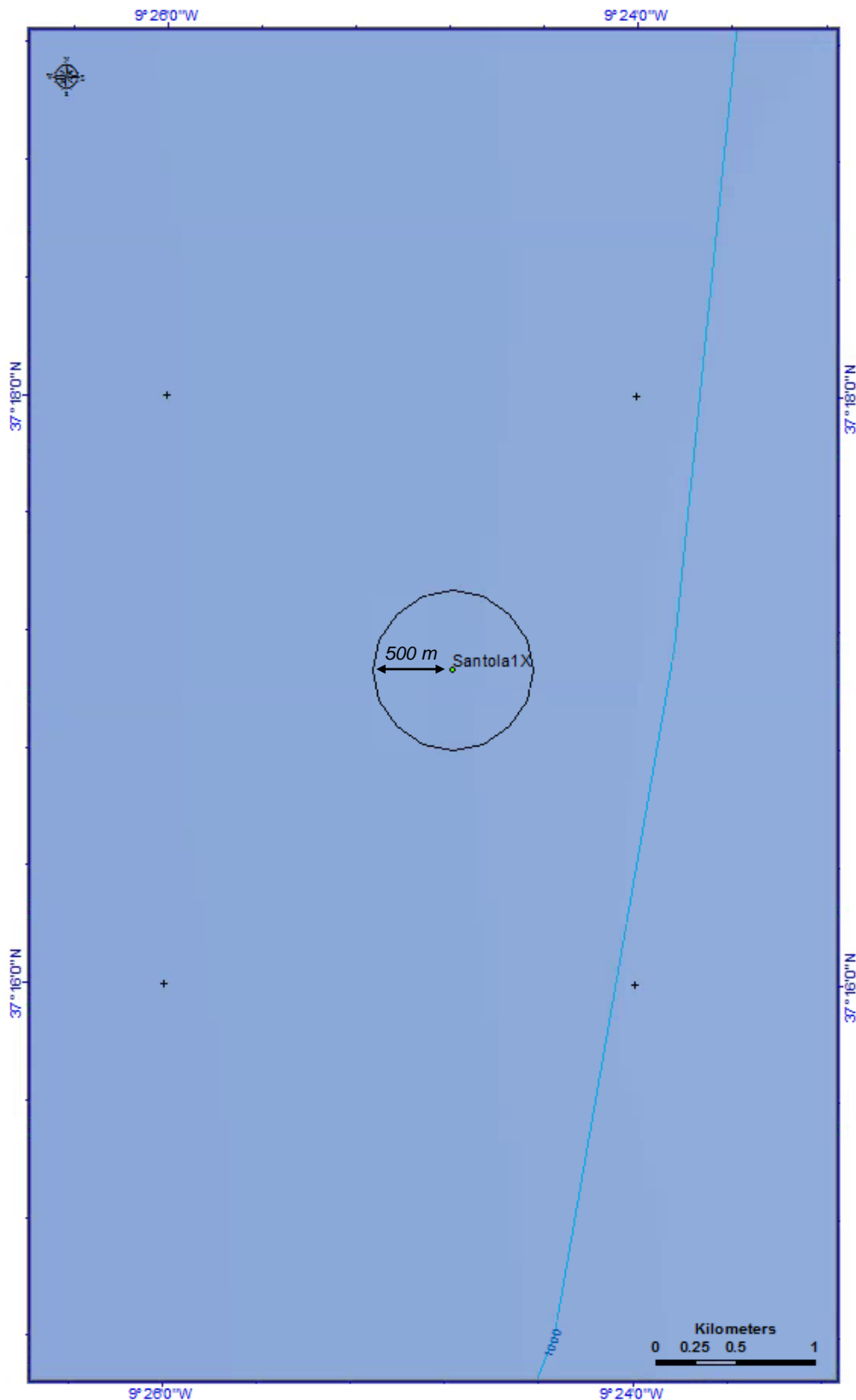


eni

# Poço Santola 1X – Zona de Segurança de 500 m

## Mapa 1:10,000

Coordinate	WGS84 UTM Zone
Projection:	Transverse Mercator
Datum:	WGS 1984
False Easting:	500,000.00
False Northing:	0
Central Meridian:	-9.0
Scale Factor:	0.9996
Latitude Of	0
Units:	Meter
MAP SCALE	1:10,000



**Zona de  
Segurança -  
radius  
500 m  
(contados a  
partir de cada  
parte do  
navio)**



eni