



MAR / CT-MAR

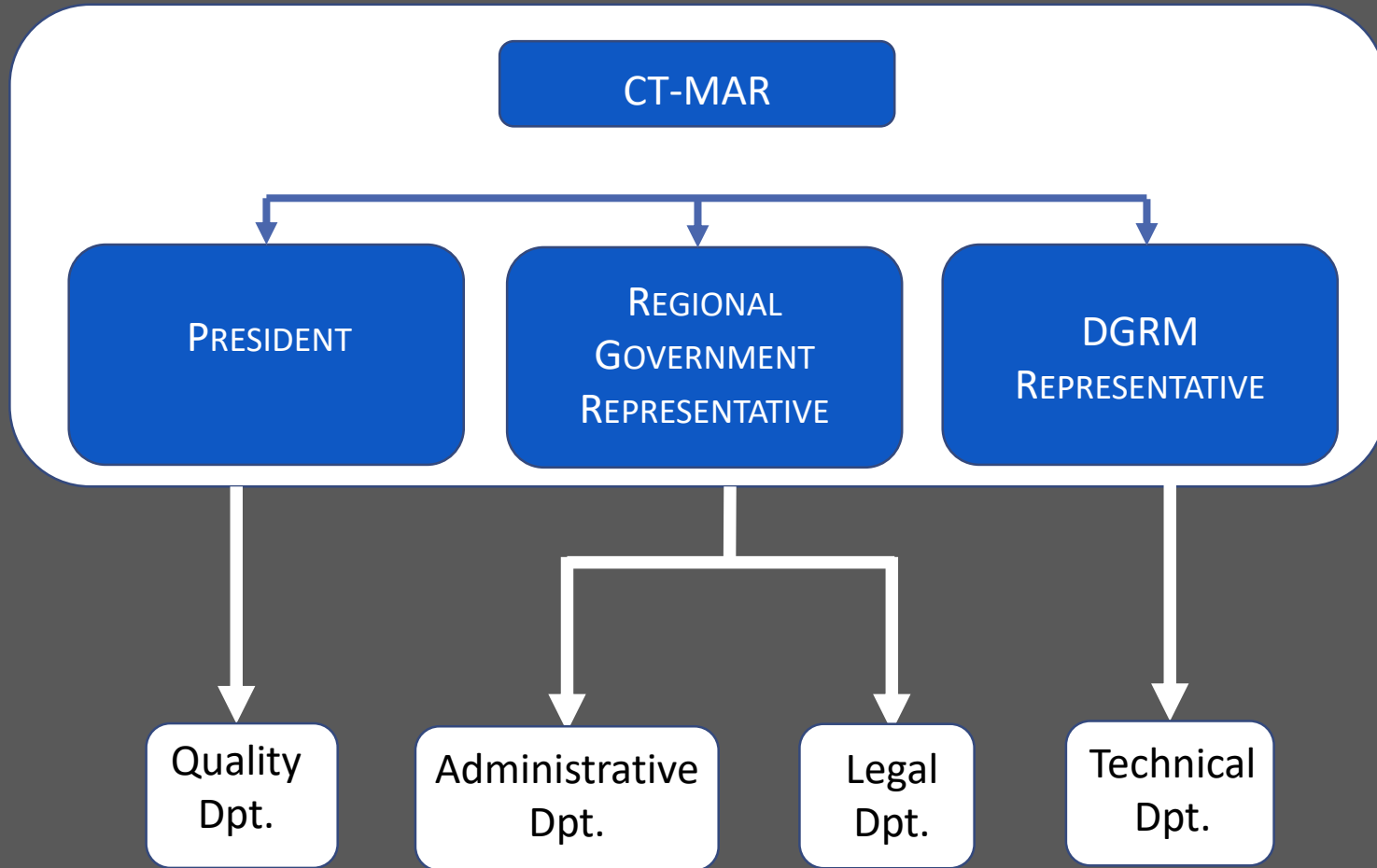
'The Technical Commission on Madeira as an institutional partner for shipowners'

COMPETENCES

- SHIP REGISTRY (MERCHANT & YACHT)
- PERFORM INSPECTION TO THE FLEET
- ISSUANCE OF SHIP CERTIFICATES
- ISSUANCE AND REVIEW OF THE MSMD



STRUCTURE



ACHIEVEMENTS

- COMBINATION OF EFFORTS (REGIONAL AND NATIONAL GOVERNMENTS)
- FLEET GROW (NUMBER & TONNAGE)
- ISO 9001/2015 CERTIFICATION
- ELIGIBILITY CRITERIA
- PERSONNEL HIRING
- PROMPT REPLY TO TECHNICAL AND ADMINISTRATIVE REQUESTS
- EFFICIENT MALFUNCTION REPORTING PROCESS
- FLEET AGE REDUCTION



IN PROGRESS...

- PROCESS OPTIMIZATION (LEGAL, ADMINISTRATIVE)
- REDUCE THE TIME OF REPLY
- IMPROVE QUALITY INDEX – DOCUMENTAL NON CONFORMITIES
- FLEET MONITORING PROGRAM (PSC PERFORMANCE)
- FSI – PILOT PROJECT



For the Future!

- LEGAL STRATEGY IN ORDER TO BECOME MORE ATTRACTIVE
- YACHTING INDUSTRY
- CSR MONITORING APPLICATION
- IMPROVEMENTS ON THE TECHNOLOGICAL TOOLS
- PERMANENT MONITORING OF THE PROCESSES
- E-DOCS COVERING ALL STATUTORY DOCUMENTS
- FLAG STATE INSPECTION – WORLDWIDE





MESSAGE FROM THE CT-MAR PRESIDENT

