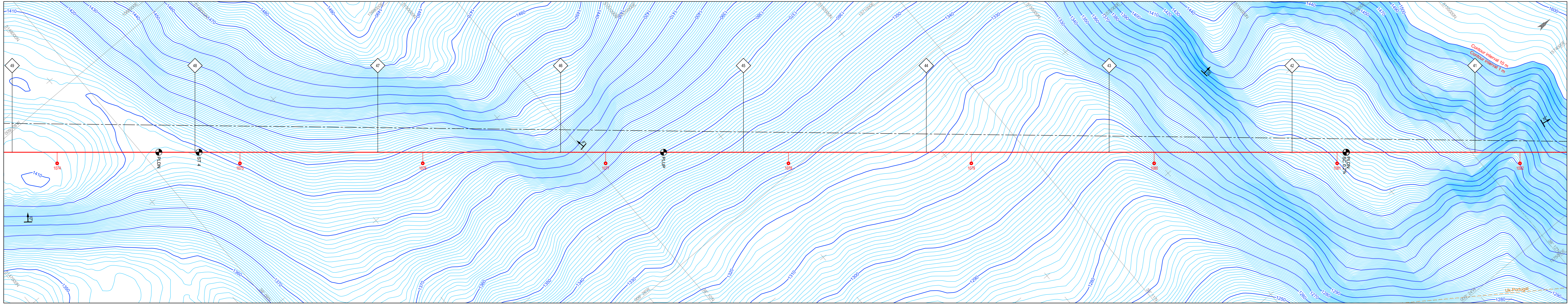
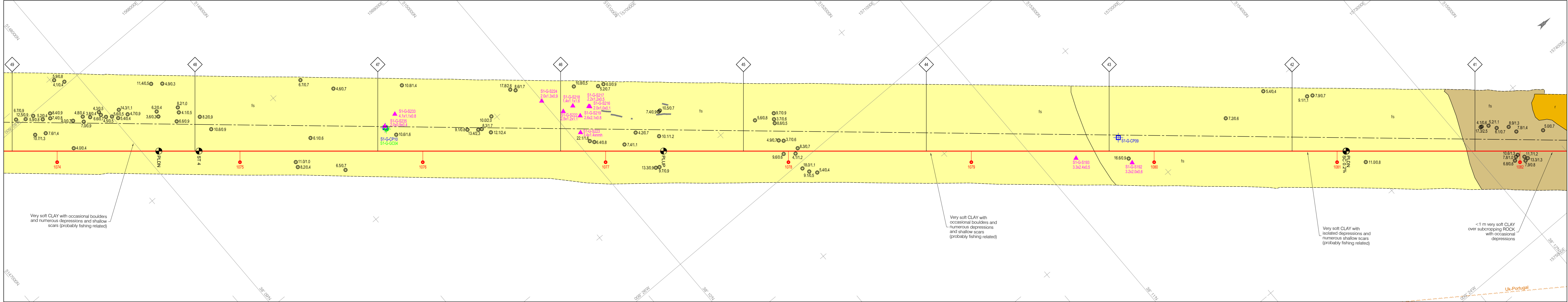


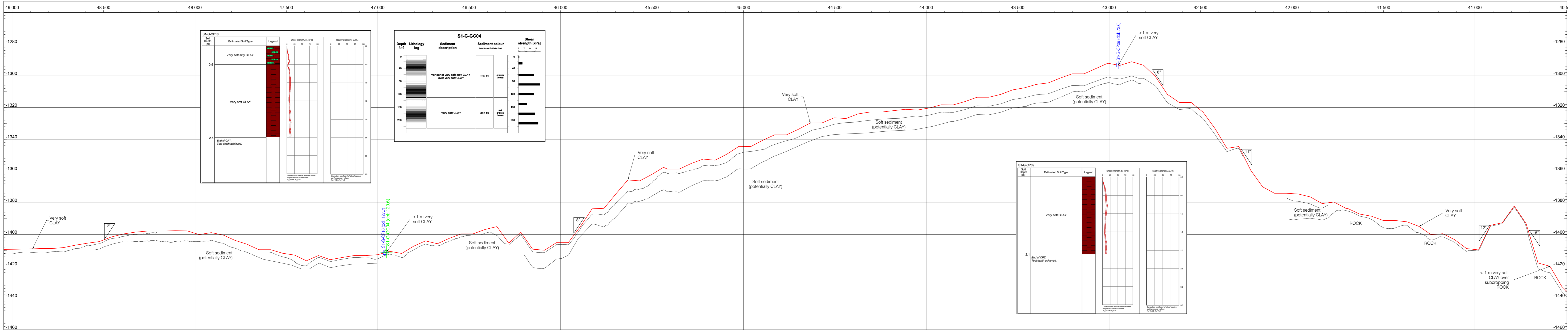
BATHYMETRY PANEL



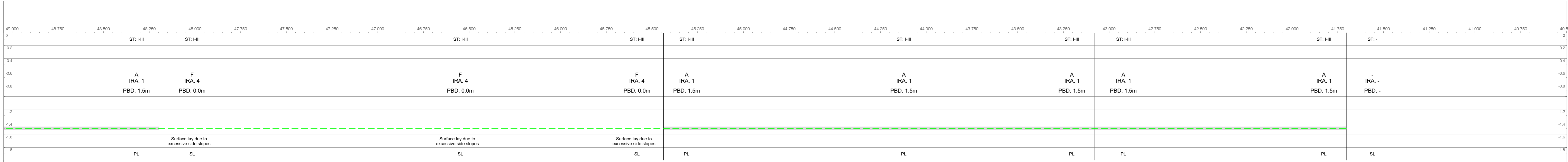
SEABED FEATURE PANEL



SEABED PROFILE AND GEOLOGICAL INFORMATION PANEL

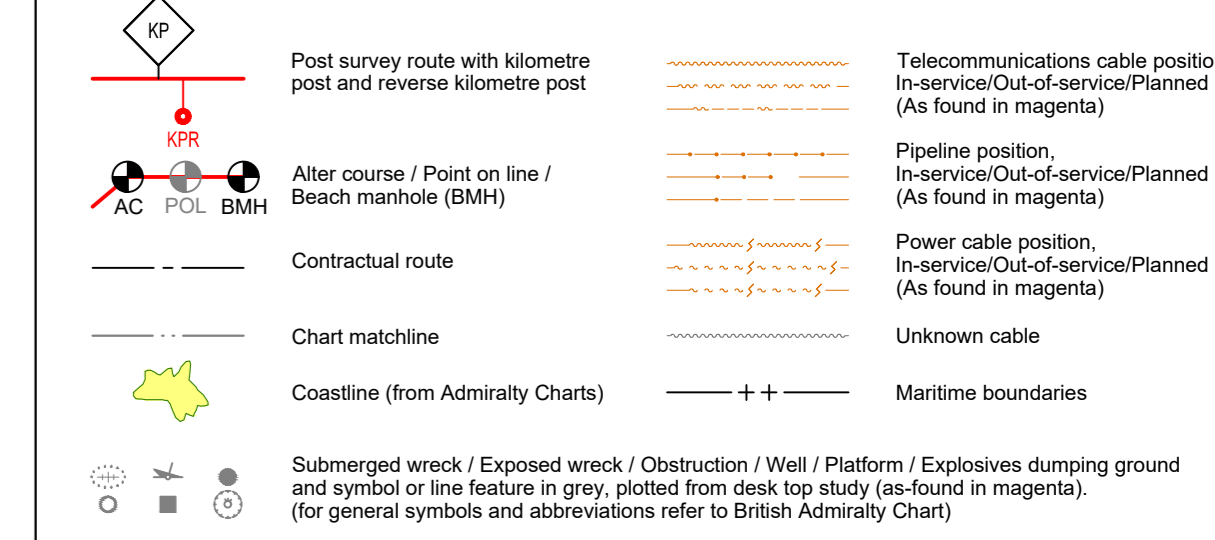


ROUTE ENGINEERING - BURIAL ASSESSMENT

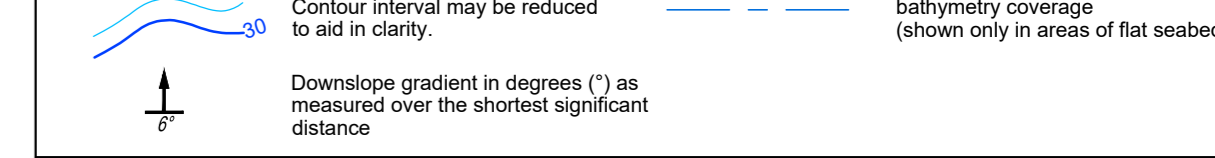


Burial Categories	Installation Risk Assessment (IRA) Categories	Seabed Type Classification for Burial Assessment	Relative Density	Sediment Description
A	Low risk	I	< 15	Typically, very loose SAND/SILT, or very soft CLAY/SILT
B	Moderate risk	II	15 - 30	Typically, loose SAND/SILT, or soft CLAY/SILT
C	High risk	III	30 - 65	Typically, medium dense SAND/SILT, or firm SILT/CLAY
D	Very High risk	IV	65 - 85	Typically, dense SAND/SILT, or stiff SILT/CLAY
E	Extremely High risk	V	85 - 95	Typically, very dense SAND/SILT, or very stiff CLAY/SILT
F	Unassessable	VI	> 95	Weathered bedrock or indurated sediment (quartz cemented)

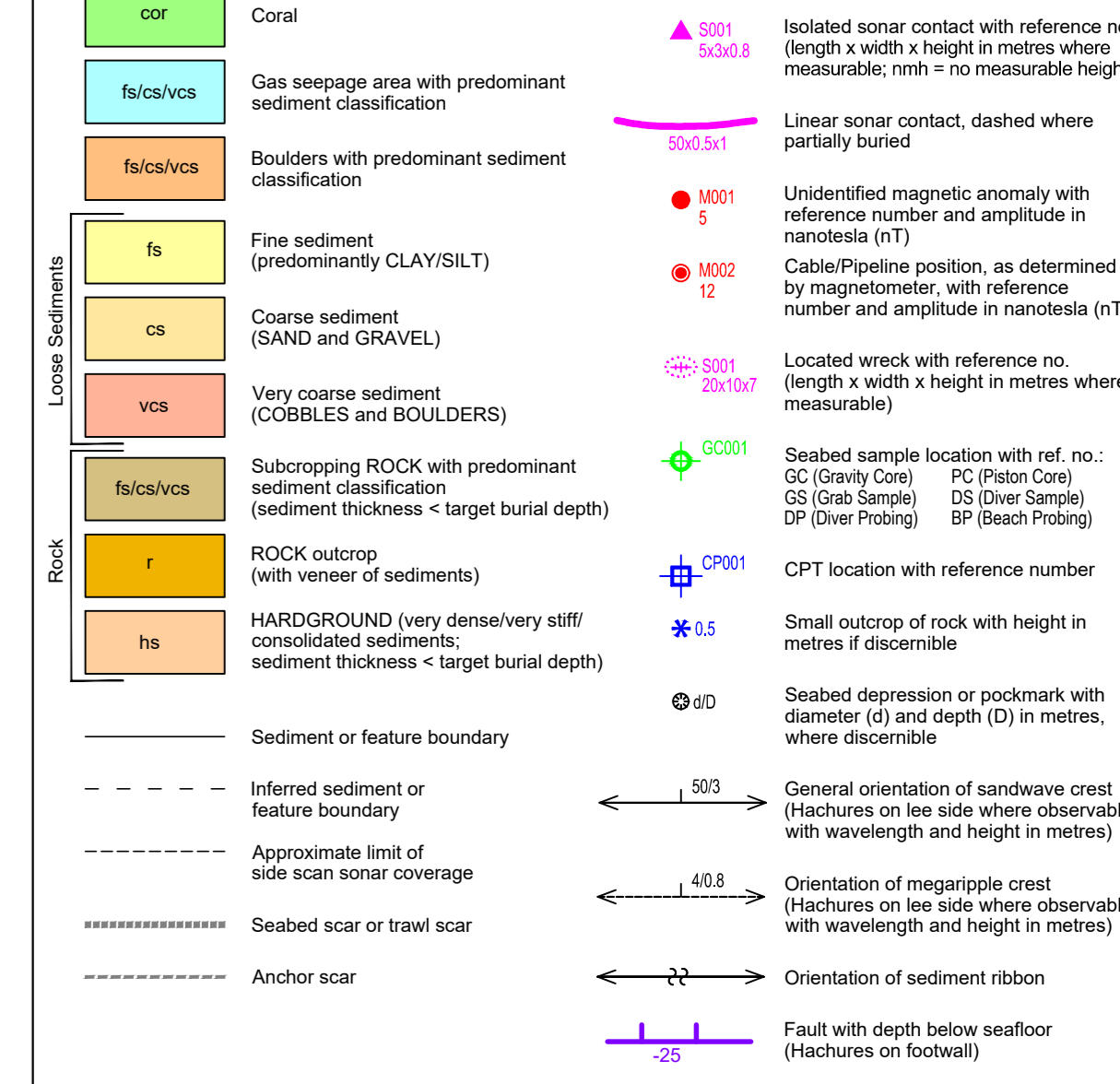
CARTOGRAPHIC SYMBOLS



BATHYMETRY



SEABED FEATURES AND SHALLOW GEOLOGY



SHALLOW GEOLOGY PROFILE



CHART COMMENTS:

Cable and Pipeline Crossings: None  
 Hazards/Remarks: In the northwestern charted area, the seabed comprises very soft CLAY overlying subsiding ROCK with occasional depressions. Slopes are mostly steep to very steep (to 20°) increasing gently to moderate slope margin again in the southwestern charted area. Firm, scattered conglomerate, very soft CLAY with depressions (locally numerous) are present along the route. Numerous shallow scars (probably fishing related) and occasional boulders are also present.

GENERAL NOTES:

Survey Vessel: MV Fugro Gauss  
 Navigation Systems: Seatalk 3300  
 Underwater Pos. Systems: Kongsberg HP-351  
 Motion Sensor: Kongsberg EM 122 EM 712  
 Bathymetry: EdgeTech 4200 / Knudsen 3200  
 Seabed Feature / SBP: G-862 AR/4

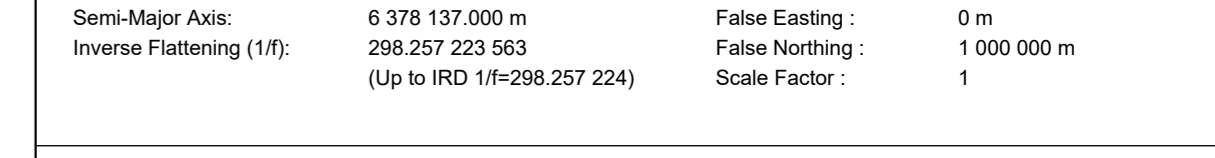
DESCRIPTIVE TERMS AND DEFINITIONS:

The criteria used for interpretation and descriptions are presented in the Survey Report.  
 Bathymetry & Tide: Depths in metres, reduced to Lowest Astronomical Tide (LAT).

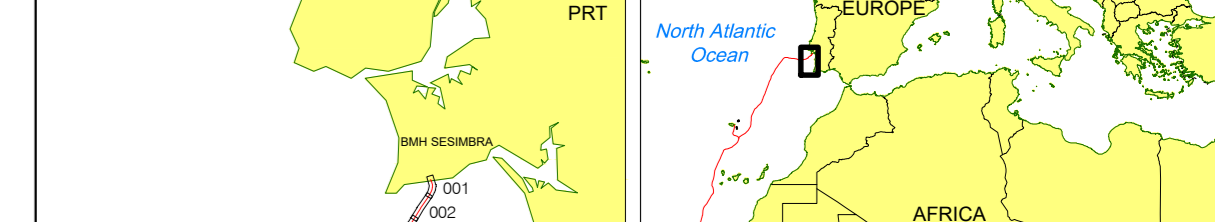
GEODETTIC PARAMETERS:

Projection: Mercator  
 Datum: WGS84  
 Semi-Major Axis: 6 378 137 000 m  
 Inverse Flattening (1/f): 298 257 223 863 (Up to SRD 14-028 257 224)

CHART LAYOUT PLAN



ROUTE OVERVIEW PLAN



This document may only be used for the purpose for which it was commissioned and in accordance with the terms of engagement for that commission. Unauthorised use of this document in any form whatsoever is undertaken entirely at the user's risk.

Survey Date: December 2019

Scale: NATURAL SCALE 1 : 10 000 AT 25°N

Scale 6679 959409 at mid-latitude of chart

Contractor: ALCATEL SUBMARINE NETWORKS

Surveyor: Fugro Germany Marine GmbH

Project Name: EQUIANO Cable Route Survey

Document Title: SEGMENT 1 BMH Sesimbra to BU MAD

ALIGNMENT CHART NO. 008 OF 010 (KP 40.497 to KP 49.047)

Revision 2

2.0 06.03.2020 RMJ/IE KS BW

1.0 07.02.2020 RMJ/IE KS BW

0.0 20.12.2019 AB OV RY

Prepared by: Checked by: Approved by:

BASED UPON: EQUIANO ST. BARR. SESIMBRA TO BU MAD, PRT2, 16-JAN-2019.xls

File Name: EQUI\_ST\_AS-008\_106