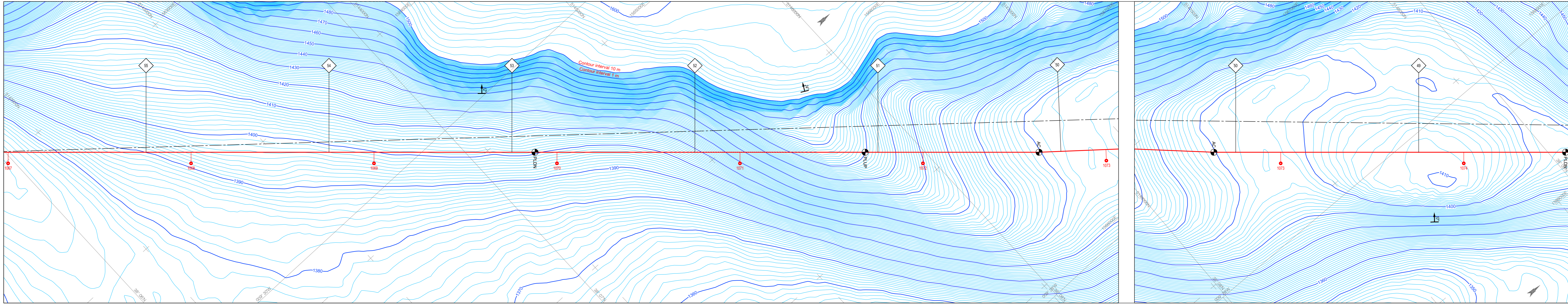
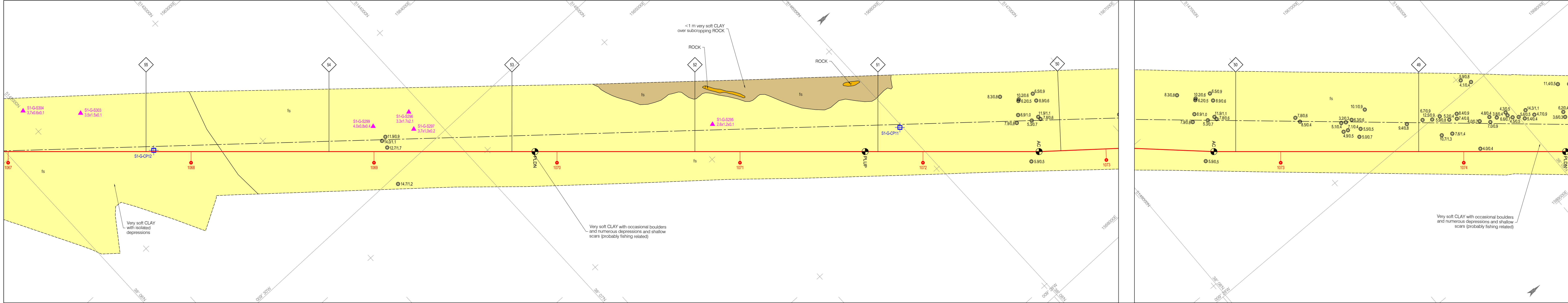


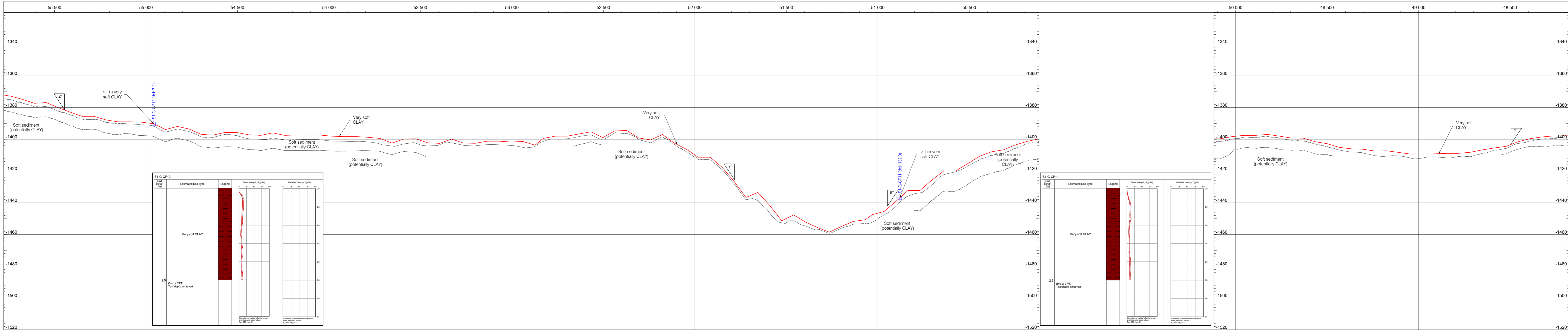
BATHYMETRY PANEL



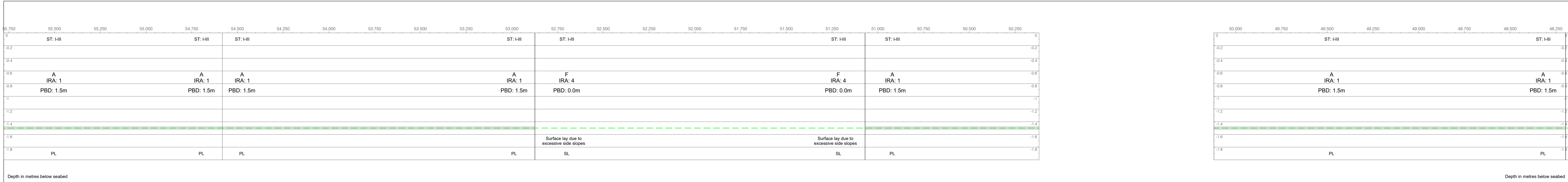
SEABED FEATURE PANEL



SEABED PROFILE AND GEOLOGICAL INFORMATION PANEL

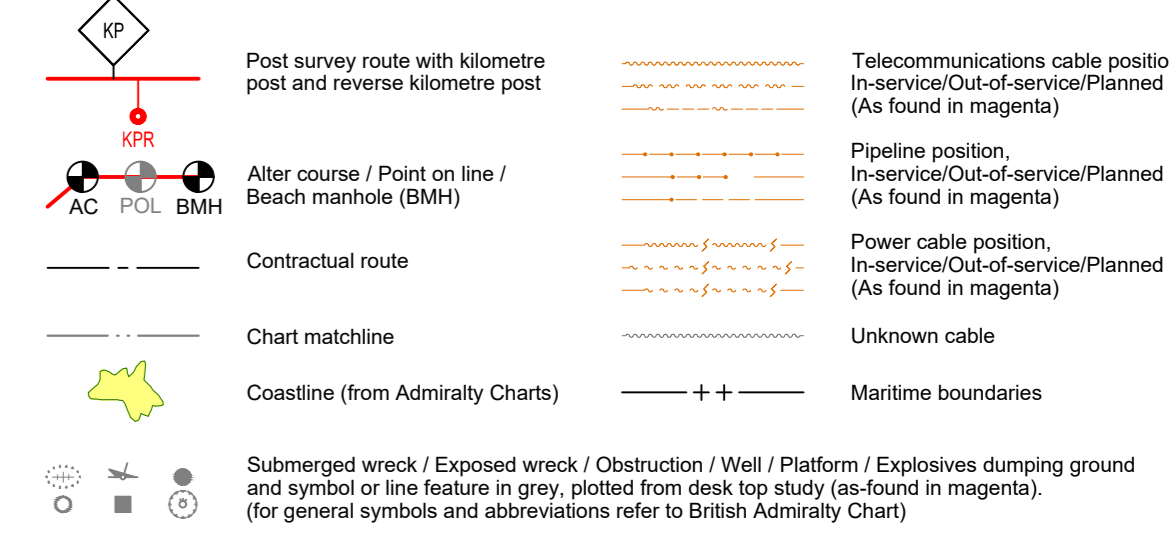


ROUTE ENGINEERING - BURIAL ASSESSMENT

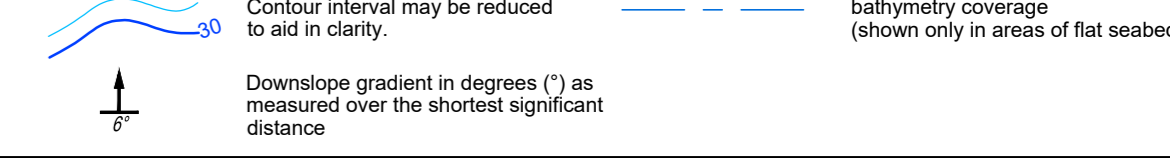


Burial Categories	Installation Risk Assessment (IRA) Categories	Seabed Type Classification for Burial Assessment	Relative Density	Sediment Description
A FULL CLOUGH BURIAL - Full through cable burial expected to target	1 Low risk	I	< 20	Typically, very loose SAND/SILT, or very soft CLAY/SILT
B REDUCED VISIBLE CLOUGH BURIAL - Target burial cover depth might not be achieved due to seabed conditions. Reduced cable cover depth predicted < 0.5m	2 Moderate risk	II	20 - 40	Typically, loose SAND/SILT, or soft CLAY/SILT
C POORLY VISIBLE CLOUGH BURIAL - Poor burial to a predicted < 0.5m cover depth	3 Significant risk	III	40 - 75	Typically, medium dense SAND/SILT, or firm SILT/CLAY
D CLOUGH OVERBURIAL - Potential Cable overburial	4 High risk	IV	75 - 100	Typically, dense SAND/SILT, or stiff SILT/CLAY
E CONTRACT SPECIFIC BURIAL - Cable burial to a specific target cover depth		V	100 - 300	Typically, very dense SAND/SILT, or very stiff CLAY/SILT
F UNPREDICTABLE Not appropriate due to seabed conditions or route design criteria		VI	> 300	Weathered bedrock or indurated sediment

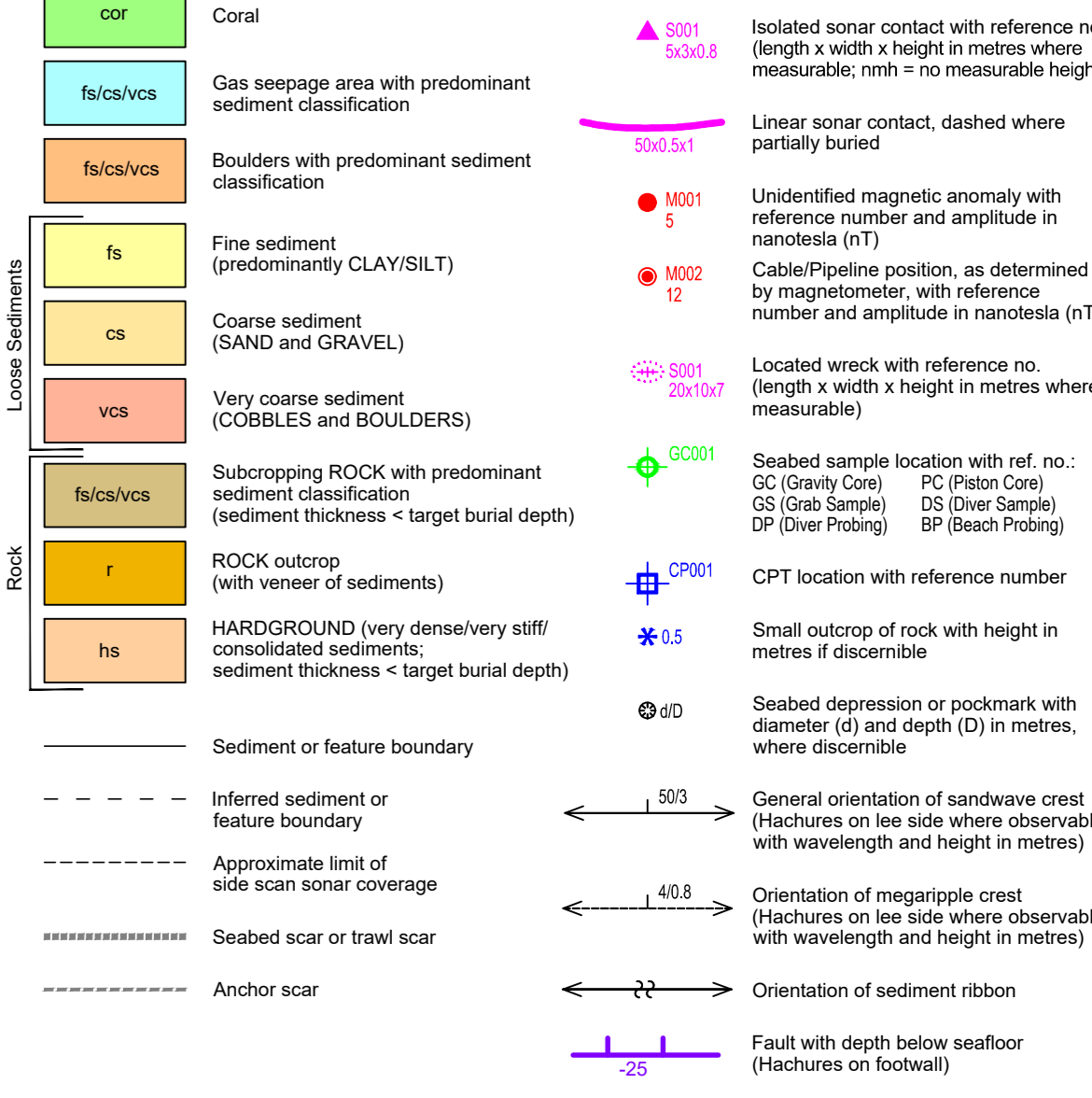
CARTOGRAPHIC SYMBOLS



BATHYMETRY



SEABED FEATURES AND SHALLOW GEOLOGY



SHALLOW GEOLOGY PROFILE



CHART COMMENTS:

Cable and Pipeline Crossings:
None

Hazards/Remarks:
The charted area comprises very soft CLAY with occasional boulders and numerous depressions as well as shallow scours (locally being related). Slopes along the route are very gentle to moderate at times along the slope margin, through the slope breaks with steep angles up to 24° within the sedimentary layers. Areas of very soft CLAY overlying outcropping ROCK and locally outcropping ROCK. The southwest-most charted area comprises very soft CLAY with isolated depressions.

GENERAL NOTES:

Survey Vessel: MV Fugro Gauss
 Navigation Systems: Seapath 3300
 Underwater Pos. Systems: Kongsberg HP-351
 Motion Sensor: Seapath 3300+ incl. MRU 5+
 Bathymetry: Kongsberg EM 122 EM 712
 Seabed Feature / SBP: EdgeTech 4200 / Knudsen 3200
 Magnetometer: G-862 AR4

DESCRIPTIVE TERMS AND DEFINITIONS:

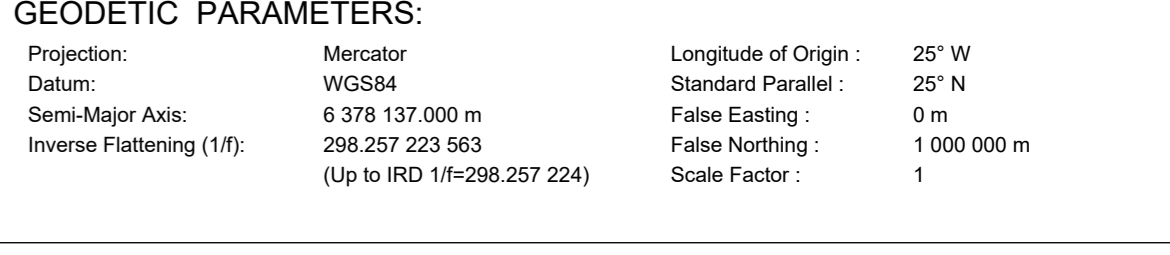
The criteria used for interpretation and descriptions are presented in the Survey Report.
 Bathymetry & Tide:
 Depths in metres, reduced to Lowest Astronomical Tide (LAT).

GEODETTIC PARAMETERS:

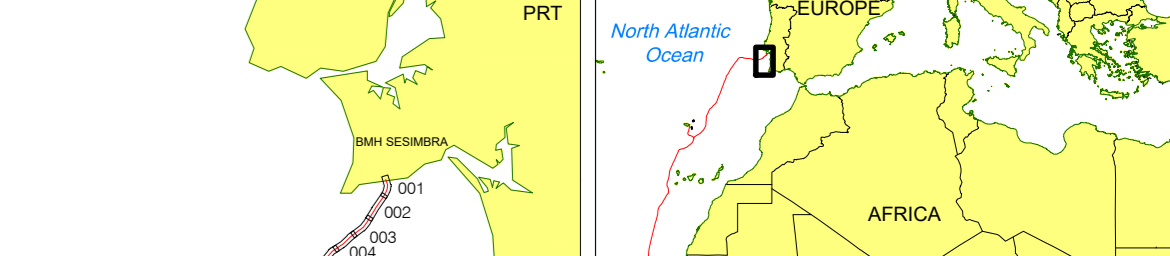
Projection: Mercator
 Datum: WGS84
 Semi-Major Axis: 6 378 137 000 m
 Inverse Flattening (1/f): 298 257 223 863 (Up to PRD 14008 257 224)

Longitude of Origin: 25° W
 Standard Parallel: 25° N
 False Easting: 0 m
 False Northing: 1 000 000 m
 Scale Factor: 1

CHART LAYOUT PLAN



ROUTE OVERVIEW PLAN



This document may only be used for the purpose for which it was commissioned and in accordance with the terms of engagement for that commission. Unauthorised use of this document in any form whatsoever is undertaken entirely at the user's risk.

Survey Date: December 2019

Scale: NATURAL SCALE 1 : 10 000 AT 25° N

Scale 6685 762401 at mid-latitude of chart

Contractor: ALCATEL SUBMARINE NETWORKS

Surveyor: Fugro Germany Marine GmbH

Project Name: EQUIANO Cable Route Survey

Document Title: SEGMENT 1 BMH Sesimbra to BU MAD

ALIGNMENT CHART NO. 009 OF 010 (KP 48.178 to KP 55.778)

Revision 2

2.0 06.03.2020 RMI/IE KS BW

1.0 07.02.2020 RMI/IE KS BW

0.0 20.12.2019 RMI/IE KS BW

Raw Date Prepared by Checked by Approved by

ROUTE EQUIANO ST. BARR. SESIMBRA TO

BASED UPON: BU MAD_PRR12_16-JAN-20.xls

File Name: EQUI_ST_AS-009_10x